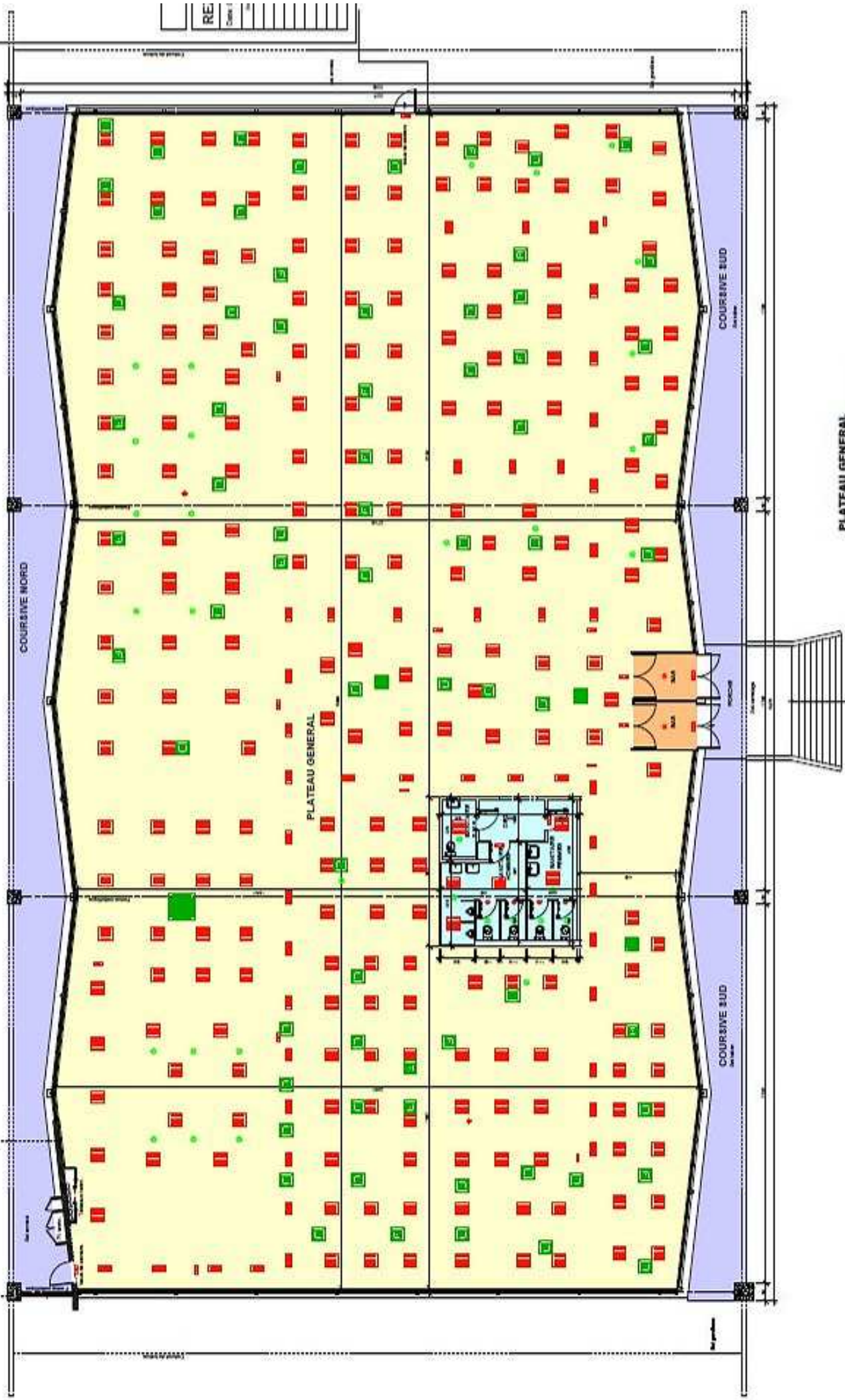


RE	Cote



PLATEAU GENERAL

- Surface utile plateau: 1 475,30 m²
- Surface utile carreaux: 39,40 m²
- Surface utile SACS d'accès: 12,70 m²
- Surface utile coursive Nord: 1 14,72 m²
- Surface utile coursive Sud: 1 15,21 m²

Total surface plateau général: 1 757,33 m²